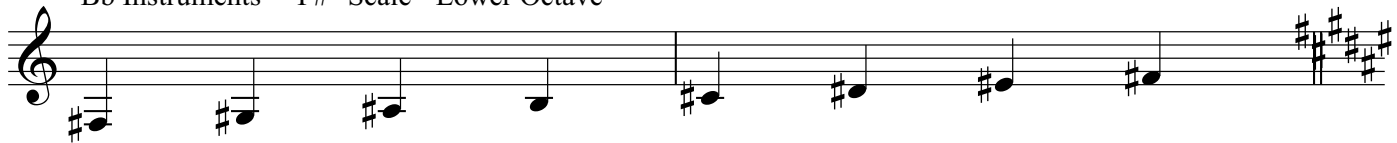


# E SIGHT-READING + RHYTHM EXERCISES

## Level 2

Bb Instruments - "F#" Scale - Lower Octave



This sheet deals with dotted rhythms and rests in cut time.  
 Dotted Half notes = 1 1/2 beat. Dotted Quarter Notes = 3/4 of a beat.  
 Half Rests = 1 beat. Quarter Rests = 1/2 of a beat.

3 A

 A musical staff in treble clef with a key signature of one sharp (F#) and a 2/4 time signature. It contains rhythmic exercises: a dotted half note F#, a dotted half note G, a dotted half note A, a dotted half note B, a dotted half note C, a dotted half note D, a dotted half note E, a dotted half note F#.

11 B

 A musical staff in treble clef with a key signature of one sharp (F#) and a 2/4 time signature. It contains rhythmic exercises: a dotted quarter note F#, eighth note G, quarter note A, dotted quarter note B, eighth note C, quarter note D, dotted quarter note E, eighth note F#, quarter note G, dotted quarter note A, eighth note B, quarter note C, dotted quarter note D, eighth note E, quarter note F#.

19 C

 A musical staff in treble clef with a key signature of one sharp (F#) and a 2/4 time signature. It contains rhythmic exercises: a dotted quarter note F#, eighth note G, quarter note A, dotted quarter note B, eighth note C, quarter note D, dotted quarter note E, eighth note F#, quarter note G, dotted quarter note A, eighth note B, quarter note C, dotted quarter note D, eighth note E, quarter note F#.

23

 A musical staff in treble clef with a key signature of one sharp (F#) and a 2/4 time signature. It contains rhythmic exercises: a dotted quarter note F#, eighth note G, quarter note A, dotted quarter note B, eighth note C, quarter note D, dotted quarter note E, eighth note F#, quarter note G, dotted quarter note A, eighth note B, quarter note C, dotted quarter note D, eighth note E, quarter note F#.

27 D

 A musical staff in treble clef with a key signature of one sharp (F#) and a 2/4 time signature. It contains rhythmic exercises: a dotted quarter note F#, eighth note G, quarter note A, dotted quarter note B, eighth note C, quarter note D, dotted quarter note E, eighth note F#, quarter note G, dotted quarter note A, eighth note B, quarter note C, dotted quarter note D, eighth note E, quarter note F#.

31

 A musical staff in treble clef with a key signature of one sharp (F#) and a 2/4 time signature. It contains rhythmic exercises: a dotted quarter note F#, eighth note G, quarter note A, dotted quarter note B, eighth note C, quarter note D, dotted quarter note E, eighth note F#, quarter note G, dotted quarter note A, eighth note B, quarter note C, dotted quarter note D, eighth note E, quarter note F#.

35 E

 A musical staff in treble clef with a key signature of one sharp (F#) and a 2/4 time signature. It contains rhythmic exercises: a dotted quarter note F#, eighth note G, quarter note A, dotted quarter note B, eighth note C, quarter note D, dotted quarter note E, eighth note F#, quarter note G, dotted quarter note A, eighth note B, quarter note C, dotted quarter note D, eighth note E, quarter note F#.

39

 A musical staff in treble clef with a key signature of one sharp (F#) and a 2/4 time signature. It contains rhythmic exercises: a dotted quarter note F#, eighth note G, quarter note A, dotted quarter note B, eighth note C, quarter note D, dotted quarter note E, eighth note F#, quarter note G, dotted quarter note A, eighth note B, quarter note C, dotted quarter note D, eighth note E, quarter note F#.