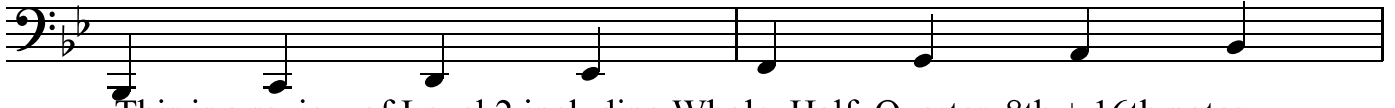


# Bb SIGHT-READING + RHYTHM EXERCISES

## Level 3

Bass Clef Instruments - Lower Octave "Bb" Scale



This is a review of Level 2 including Whole, Half, Quarter, 8th + 16th notes and Whole, Half, and Quarter rests.

Write in the counts for each note.

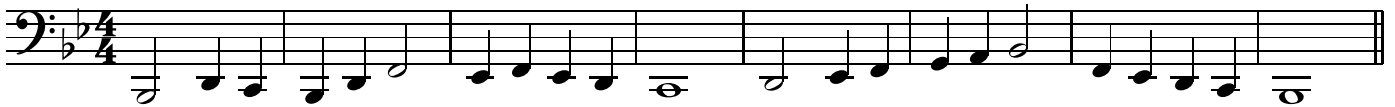
Please remember that you write the number for first beat of each note you play **BELOW** the note and you write the additional beats of longer notes and beats for rests **ABOVE**.

In 4/4 time, each measure is divided into 4 beats.

16th notes = = 1/4 beat x4      8th notes = = 1/2 beat + 1/2 beat

Quarter note = = 1 beat      Half note = = 2 beats      Whole note = = 4 beats

3 **A**



11 **B**



19 **C**



27 **D**



35 **E**



43 **F**

