

G SIGHT-READING + RHYTHM EXERCISES

Level 3

Bass Clef Instruments - Lower Octave - "G" Scale



Dotted Half Notes ♩. are notated with a number below and 2 numbers above.

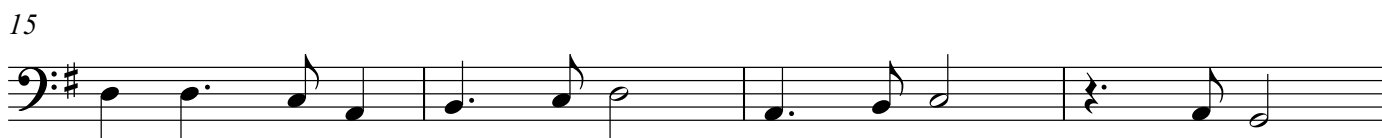
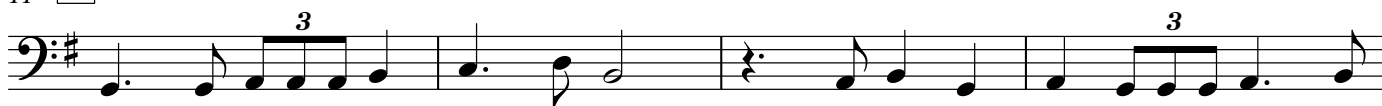
Dotted quarter notes ♩. are notated with a number below the note and a number after/above it (similar to the half note.) They will be followed by a single 8th note ♩ which will be labeled "+"

Eighth note triplets should be labeled: "#, trip-let"

3 **A**



11 **B**



19 **C**



27 **D**

