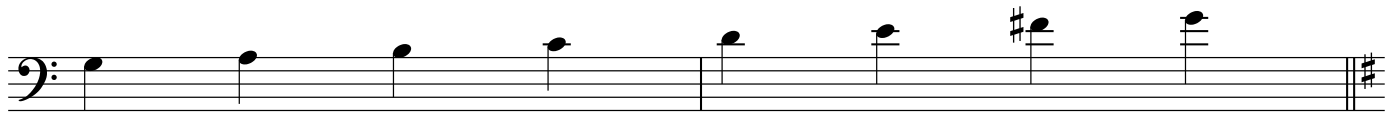


# G SIGHT-READING + RHYTHM EXERCISES

## Level 3

Bass Clef Instruments - Upper Octave - "G" Scale



Dotted Half Notes  $\text{♩.}$  are notated with a number below and 2 numbers above.

Dotted quarter notes  $\text{♩.}$  are notated with a number below the note and a number after/above it (similar to the half note.) They will be followed by a single 8th note  $\text{♩}$  which will be labeled "+"

Eighth note triplets should be labeled: "#, trip-let"

