

# Db Sight-Reading + Rhythm Exercises

## Level 3

Eb Inst - Lower - Bb Scale



Time signatures tell us what rhythmic values to play on the notes we play.

The rules of 4/4 time tell us that a quarter note = 1 beat and there are 4 beats per measure.

All of the following time signatures have a 4 as the bottom number, meaning the quarter note is still 1 beat.

The top number changes, which means we will alter the number of beats in each measure.

**A**

3 (2+3 =  $\text{♩}+\text{♩}$ )



**B**

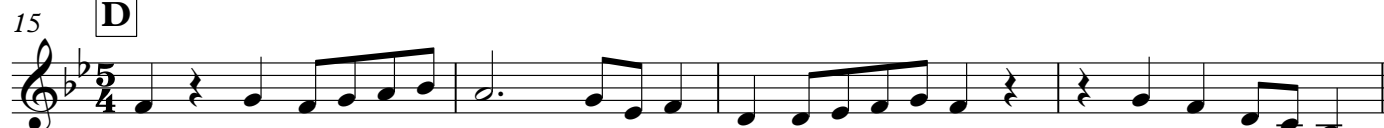


**C**

11 (3+2 =  $\text{♩}+\text{♩}$ )



**D**



**E**



**F**



**G**

