

# B Sight-Reading + Rhythm Exercises Level 3

C Inst - Lower - B Scale

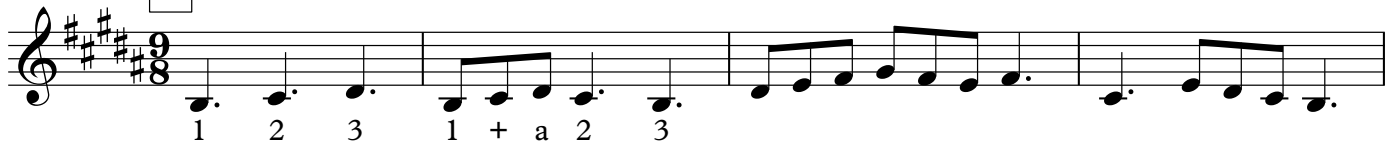


All time signatures with an "8" on the bottom follow the same rules as 6/8.

At a fast tempo (typical for these time signatures,) a dotted quarter OR 3 eighth note is equal to 1 beat.

To find out how many beats will be conducted each measure, divide the top note by 3.

**A**



**B**



**C**



**D**



**E**



**F**

