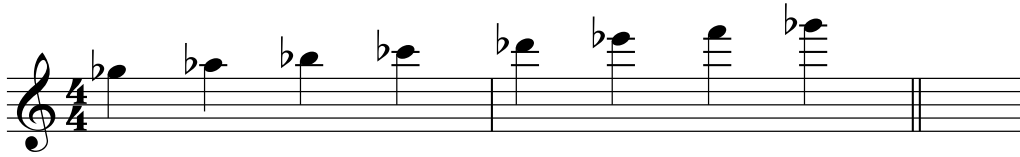


Gb Sight-Reading + Rhythm Exercises Level 3

C Inst - Upper - Gb Scale



A (3+2 = + =)

1 + a 2 +

A musical staff in 5/8 time showing a Gb scale exercise. The notes are: Gb, Ab, Bb, Cb, Db, Eb, F, Gb. The staff is divided into two measures. The first measure contains a triplet of eighth notes (Gb, Ab, Bb) followed by a quarter note (Cb) and a quarter note (Db). The second measure contains a quarter note (Eb), a quarter note (F), and a quarter note (Gb). The staff ends with a double bar line.

B (2+3 = + =)

1 + 2 + a

A musical staff in 5/8 time showing a Gb scale exercise. The notes are: Gb, Ab, Bb, Cb, Db, Eb, F, Gb. The staff is divided into two measures. The first measure contains a quarter note (Gb) and a quarter note (Ab). The second measure contains a quarter note (Bb), a quarter note (Cb), and a quarter note (Db). The staff ends with a double bar line.

C

A musical staff in 5/8 time showing a Gb scale exercise. The notes are: Gb, Ab, Bb, Cb, Db, Eb, F, Gb. The staff is divided into two measures. The first measure contains a quarter note (Gb) and a quarter note (Ab). The second measure contains a quarter note (Bb), a quarter note (Cb), and a quarter note (Db). The staff ends with a double bar line.

D (2+2+3 = + =)

1 + 2 + 3 + a

A musical staff in 7/8 time showing a Gb scale exercise. The notes are: Gb, Ab, Bb, Cb, Db, Eb, F, Gb. The staff is divided into two measures. The first measure contains a quarter note (Gb), a quarter note (Ab), and a quarter note (Bb). The second measure contains a quarter note (Cb), a quarter note (Db), and a quarter note (Eb). The staff ends with a double bar line.

E (3+2+2 = + + =)

A musical staff in 7/8 time showing a Gb scale exercise. The notes are: Gb, Ab, Bb, Cb, Db, Eb, F, Gb. The staff is divided into two measures. The first measure contains a quarter note (Gb), a quarter note (Ab), and a quarter note (Bb). The second measure contains a quarter note (Cb), a quarter note (Db), and a quarter note (Eb). The staff ends with a double bar line.

F (2+3+2 = + + =)

A musical staff in 7/8 time showing a Gb scale exercise. The notes are: Gb, Ab, Bb, Cb, Db, Eb, F, Gb. The staff is divided into two measures. The first measure contains a quarter note (Gb), a quarter note (Ab), and a quarter note (Bb). The second measure contains a quarter note (Cb), a quarter note (Db), and a quarter note (Eb). The staff ends with a double bar line.