

# E♭ SIGHT-READING + RHYTHM EXERCISES

## Level 3

Bass Clef Instruments - "E♭" Scale - Lower Octave



The time signature for "Cut Time" is 2/2.

This means that there are 2 beats per measure, and that the half note = 1 beat.

It looks just like 4/4, but all note values are cut in half.

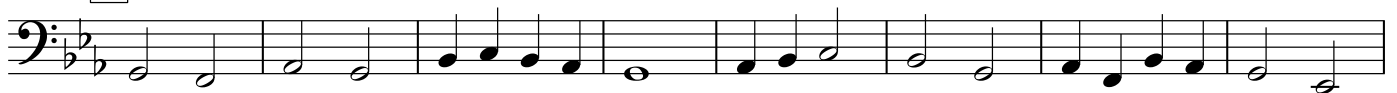
Half Notes = 1 beat. Whole Notes = 2 beats.

Quarter Notes = 1/2 beat. Eighth Notes = 1/4 beat.

3 **A**



11 **B**



19 **C**



27 **D**



35 **E**



43 **F**

